

## CARD D Sedatives

1

(picture not available)  
**Methaqualone**  
(includes Sopor®,  
Quaalude®)

2



**Nembutal® Sodium**

(picture not available)  
**Pentobarbital**



**Seconal®**

(picture not available)  
**Secobarbital**

(picture not available)  
**Butalbital**

3



**Restoril®**



**Temazepam**

4



**Amytal®**

7



**Dalmane®**

8



**Halcion®**

10



**Placidyl®**

5



**Butisol®**

6

**Chloral Hydrate**

9



**Phenobarbital**

11



**Tuinal®**

## CARD C Stimulants

1

(picture not available)  
**Methamphetamine**  
("speed" or "ice" or  
"crank")



**Desoxyn®**

(picture not available)  
**Methedrine**

2

**Amphetamines**



**Benzedrine®**



**Biphetamine®**



**Fastin®**



**Phentermine**



3



**Ritalin®**



**Methylphenidate**

4



**Cylert®**

7



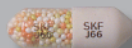
**Didrex®**

12



**Plegine®**

8



**Eskatrol®**

13



**Preludin®**

5



**Dexedrine®**

9



**Ionamin®**

14



**Sanorex®**

6



**Dextroamphetamine**

10



**Mazanor®**

11

**Obedrin-LA®**

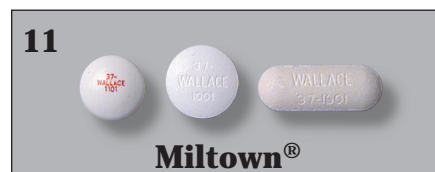
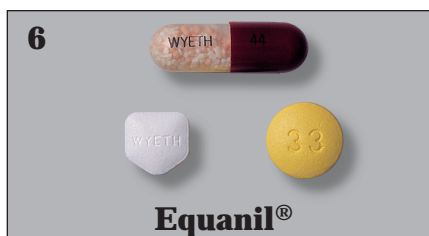
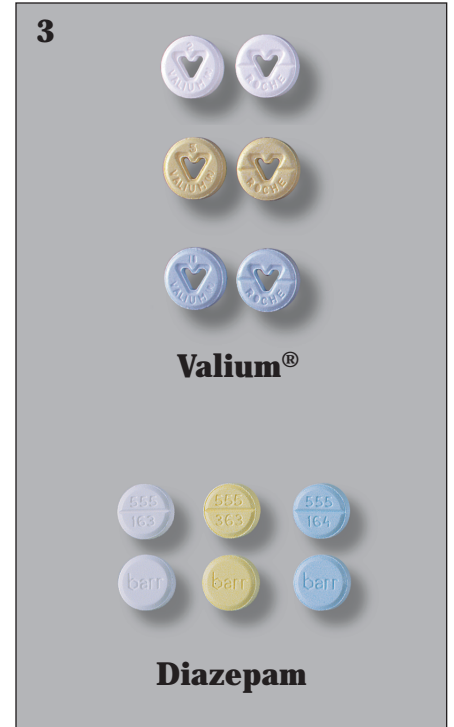
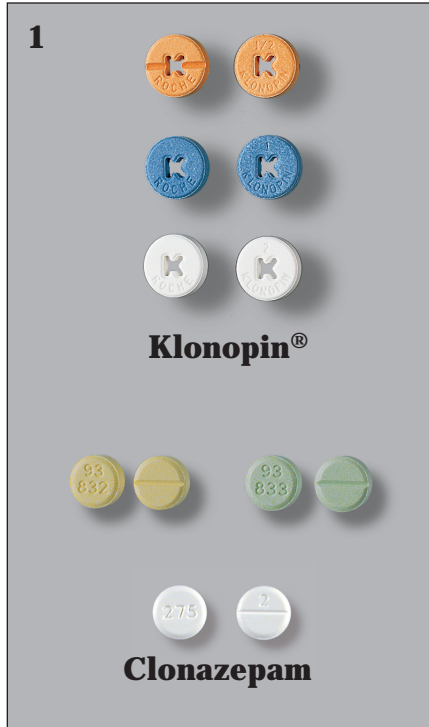
15



**Tenuate®**

## CARD B

### Tranquilizers



## CARD A

### Pain Relievers

